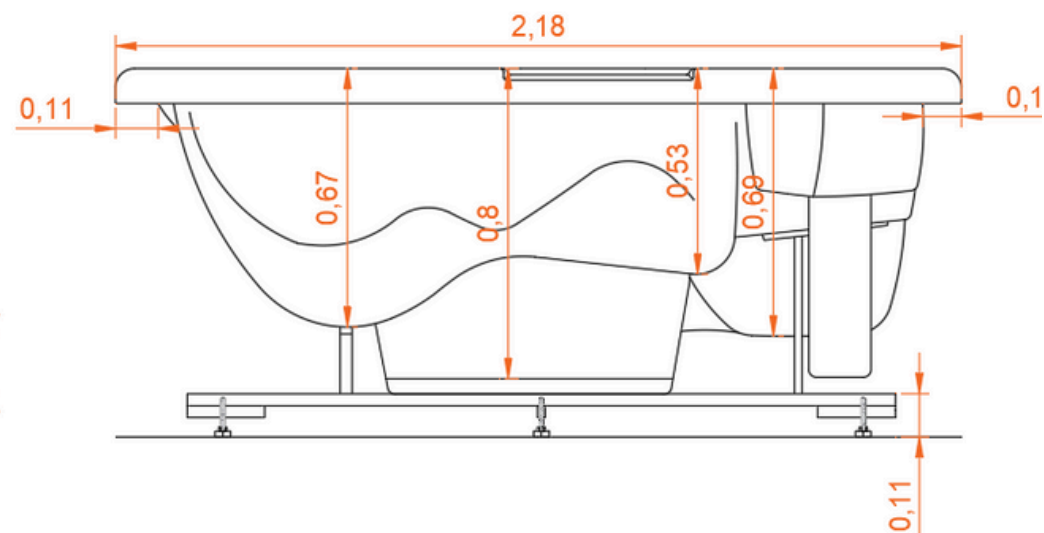
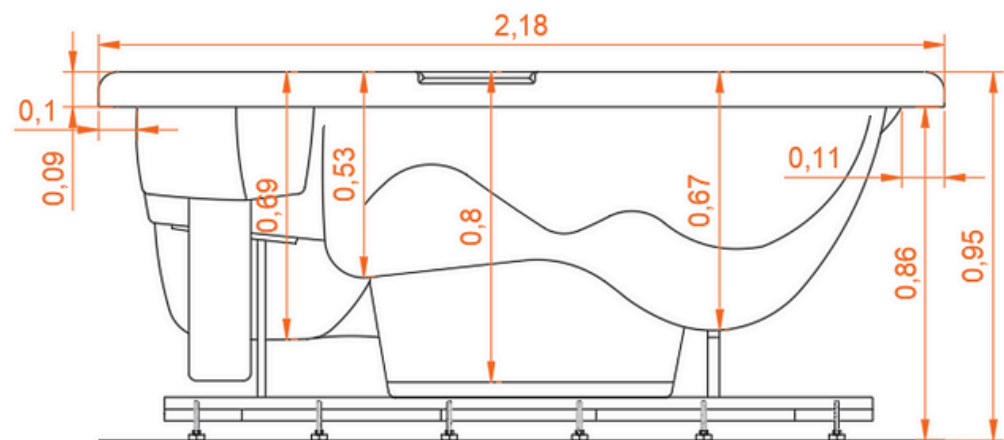
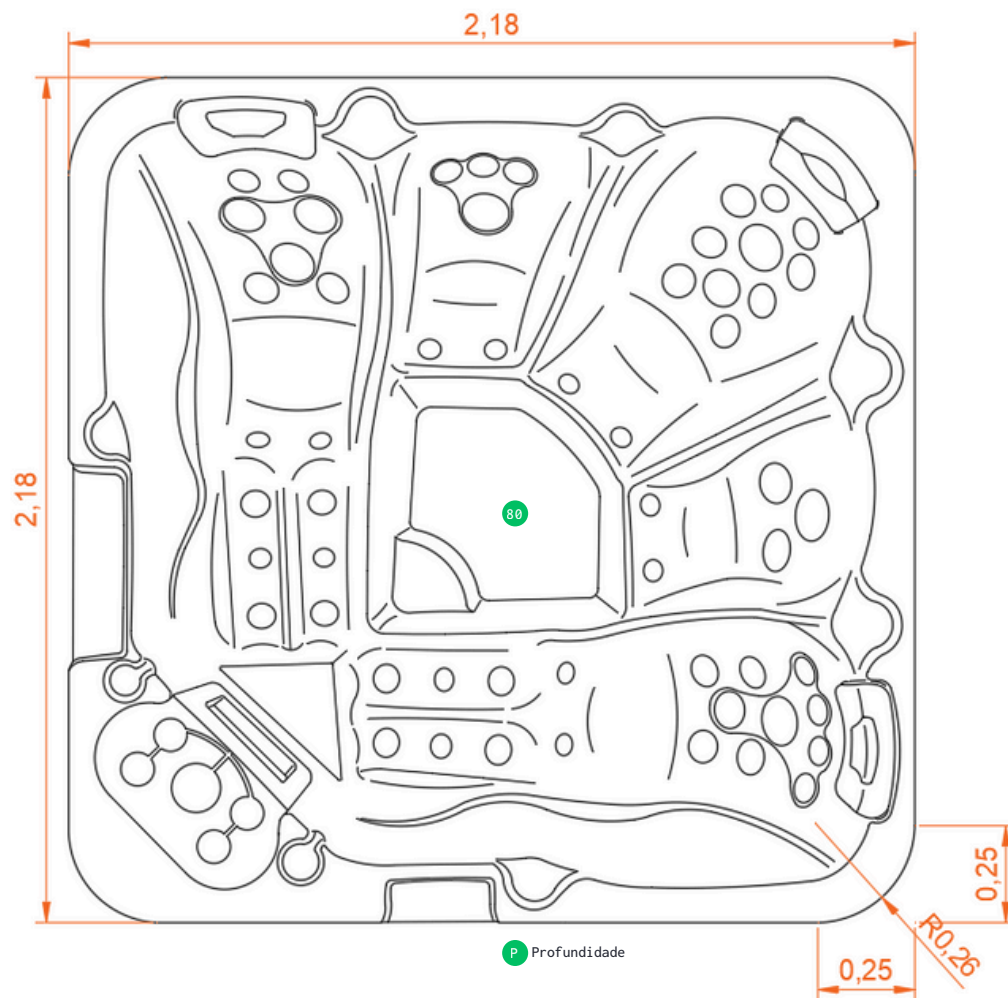




FICHA TECNICA

**SPA BOS-218**



## Ficha técnica

### SPA BOS-218

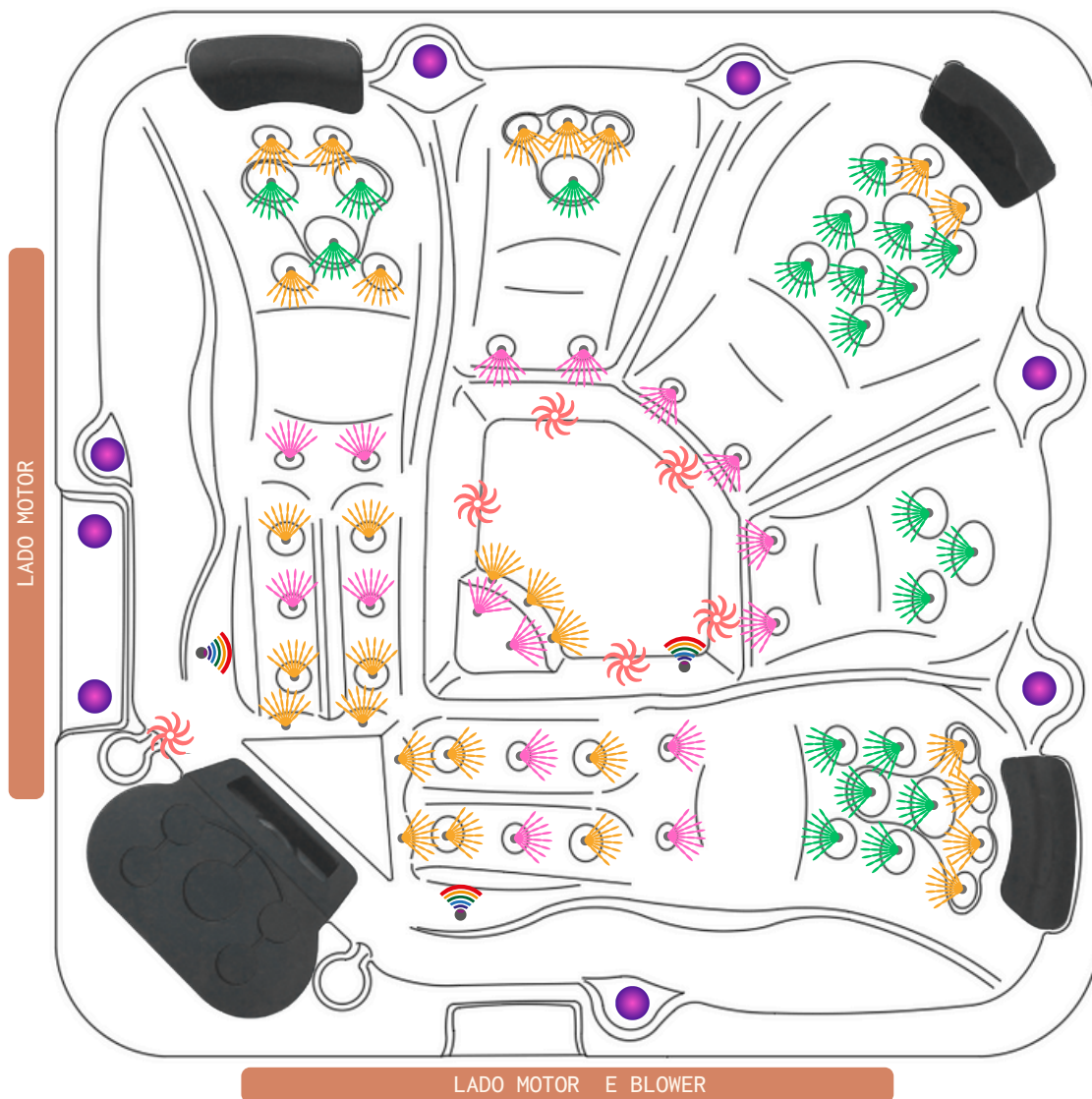
Peso: ~220 Kg

Litragem: 1.770 Lts

Lugares: 5 (3 ASSENTOS e 2 CHAISE)

Medidas: 2,18 x 2,18 x 0,80 Metros





## SPA BOS-218 - PREMIUM

UND.	ICON	EQUIPAMENTO	Ø SERRA
21		JATO GRANDE (HIDRO)	57mm
28		JATO MÉDIO (HIDRO)	25mm
XX		JATO PEQUENO HIDRO	14mm
16		JATO PEQUENO BLOWER	14mm
08		AREJADOR	33mm
06		SUCÇÃO	60mm
XX		RALO DE FUNDO	51mm
03		CROMOTERAPIA	51mm
Numeração do Travesseiro			